



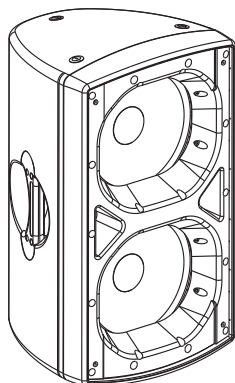
SI200B





CONTENTS

PRODUCT FEATURES	1
SPECIFICATION	1
ACOUSTIC CHARTS	2
INSTALLATION	4
DIMENSIONS	4
LIMITED WARRANTY	5



PRODUCT FEATURES

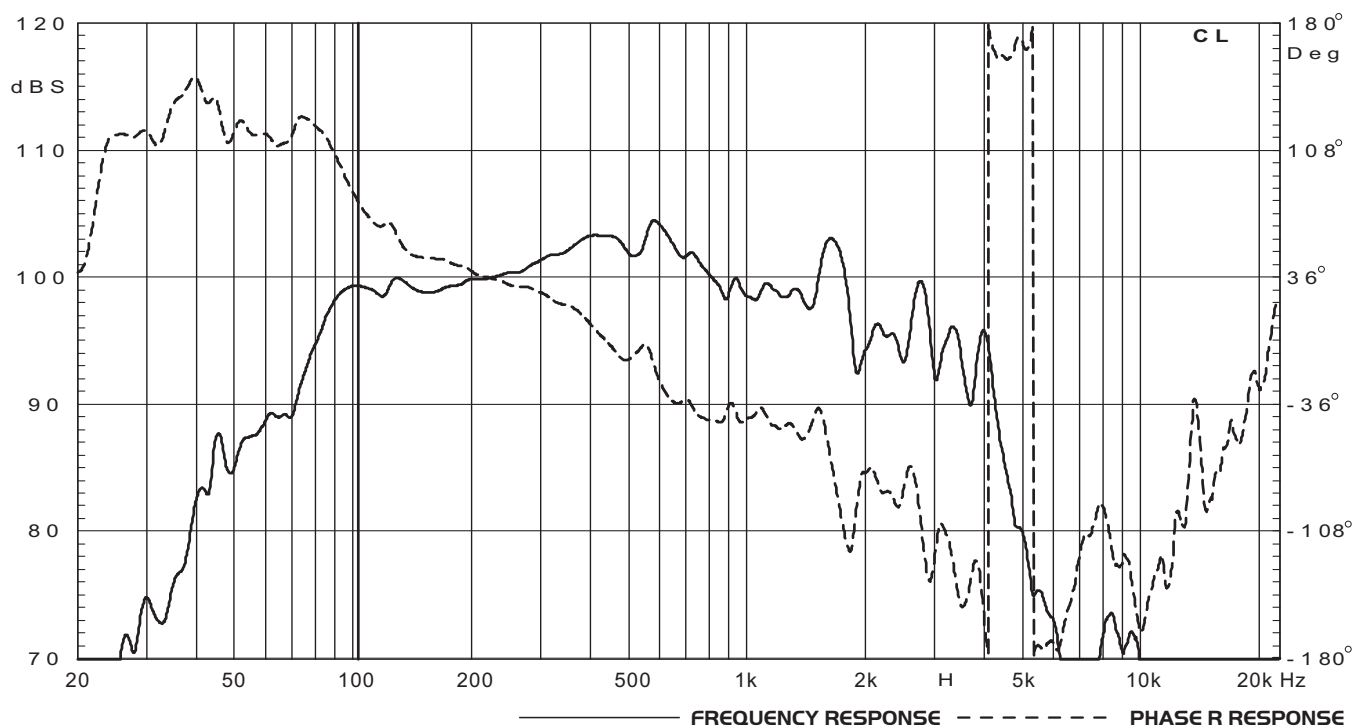
- ☐ Two way full range speaker.
- ☐ Two 12 inch big power bass transducers, the power can reach 800W.
- ☐ The enclosure is injected by high intensity with auxiliary gas tooling mould, through intensify processing inside and surface cosmetic rugged-eroded technology.
- ☐ The transducer is designed by computer simulation, with unique coaxial transducer. Short horn loading for middle & low frequency, dynamic big power and high sensitivity is available.
- ☐ Be suitable for complex middle & long distance venues sound reinforcement requirements.
- ☐ Suitable for gyms fixed installation venues where need enhancing middle & low frequency.

SPECIFICATION

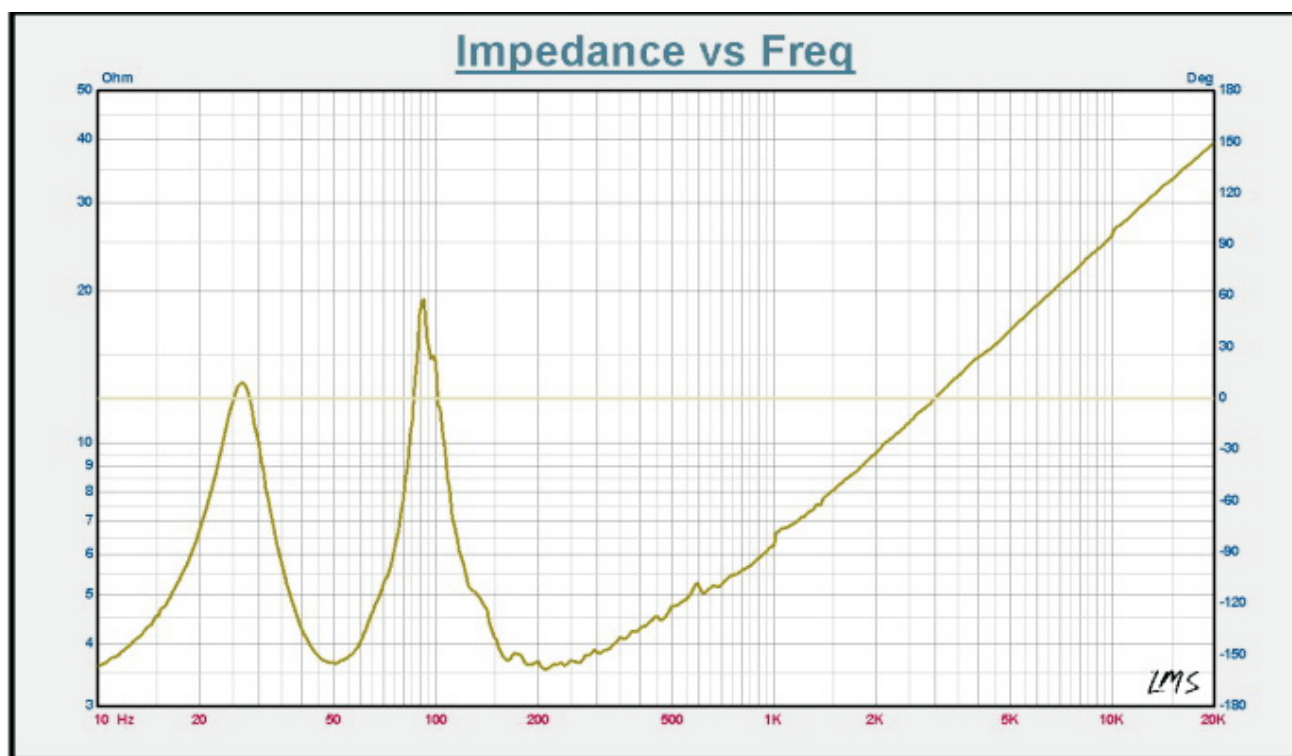
Transducers	LF: 12" x 2
Frequency Response(-3dB)	50Hz-1.8kHz
Sensitivity(1m/1W)	99dB
SPL(1m)	128dB
Max.SPL(1m)	134dB
Power(RMS)	800W
Power(Program)	1600W
Power(Peak)	3200W
Rated Impedance	4
DC impedance	3.2
Crossover Point	<250Hz
THD	<3%
Input Connectors	NL4 x 2 , 1+ 1-
Net Weight	24.5g
Gross Weight	28kg
Dimensions(WxDxH)	416 x 423 x 721mm
Packing Dimensions(WxDxH)	485 x 485 x 792mm

SI200B

FREQUENCY、PHASE RESPONSE

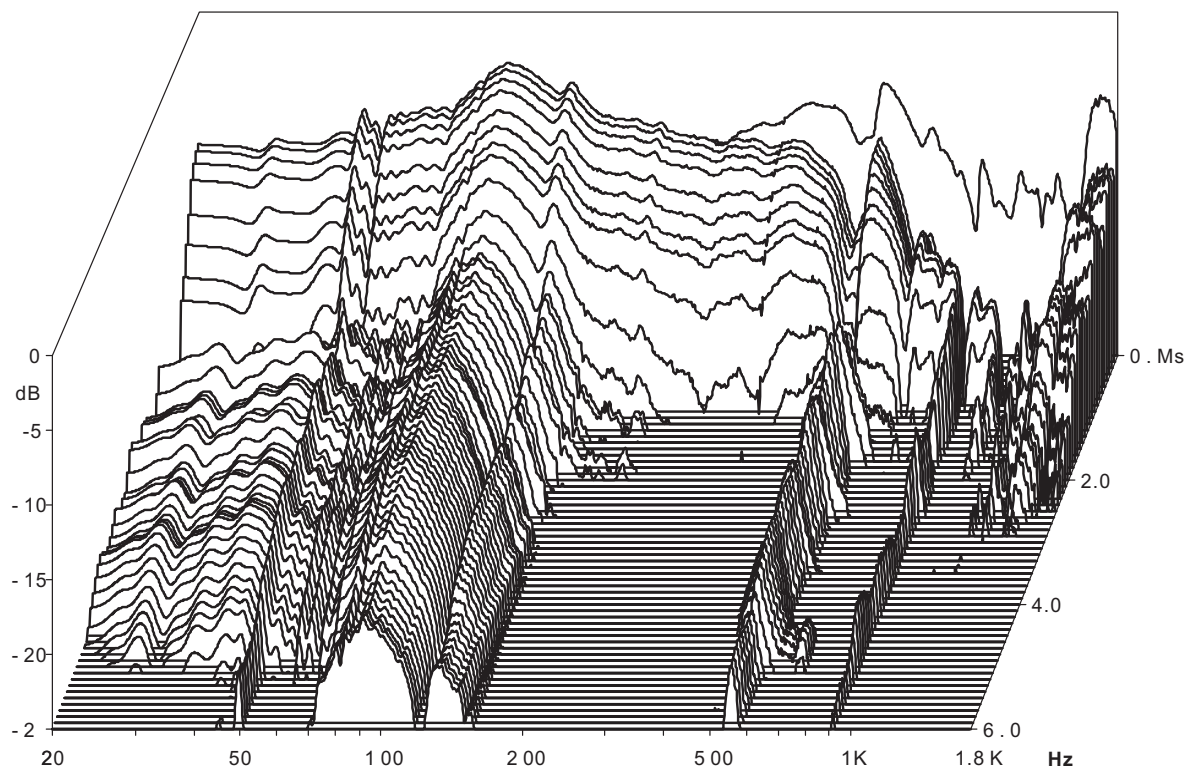


IMPEDANCE RESPONSE

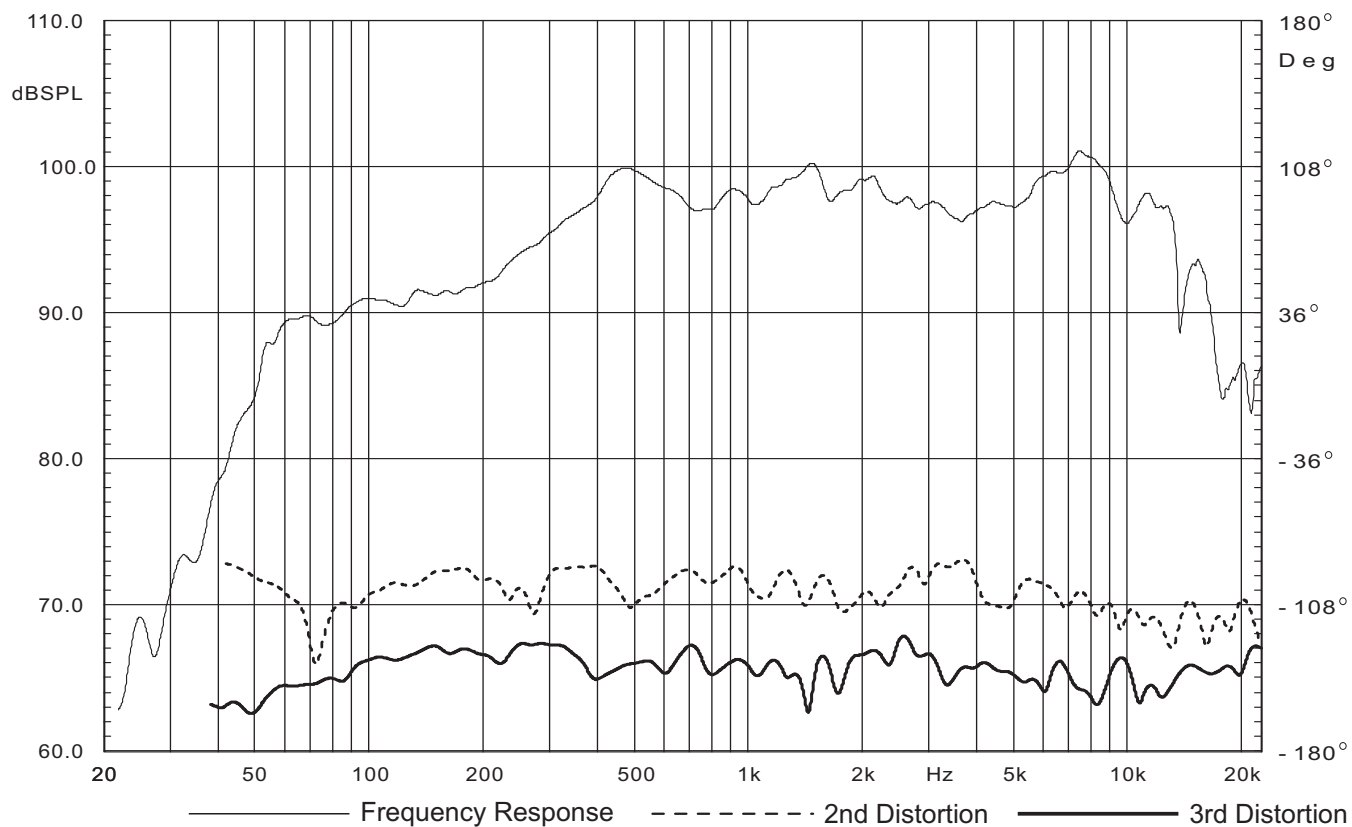


SI200B

WATERFALL

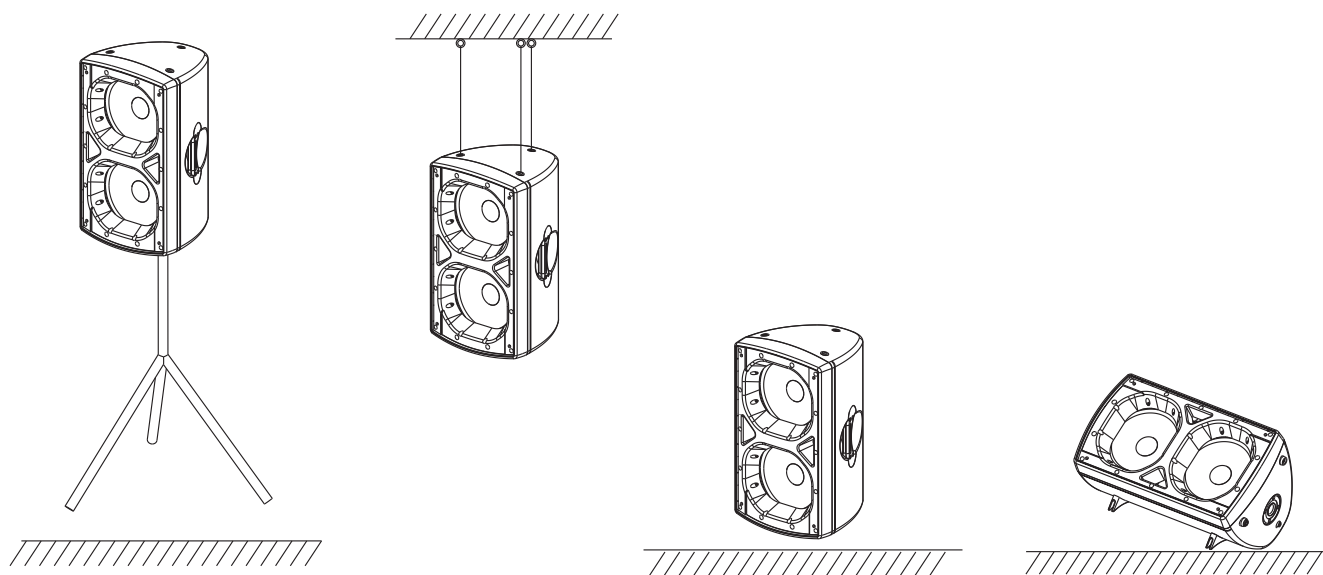


THD

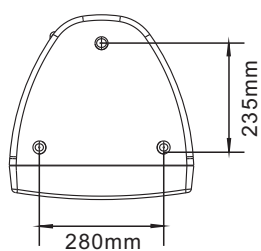


SI200B

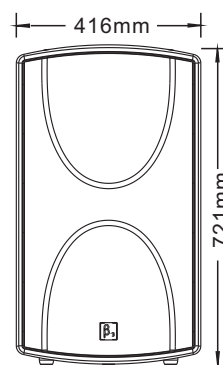
INSTALLATION



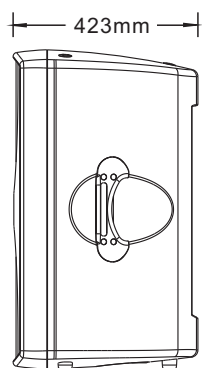
DIMENSIONS



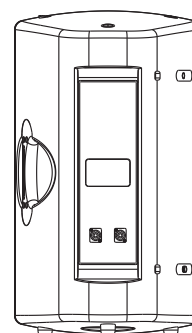
Top view



Front view



Side view



Back view

LIMITED WARRANTY

If malfunction occurs during the specified warranty period from the date of original purchase, the product will be repaired or replaced without charge by Elder Audio.

The Limited Warranty does not apply to:

- (a) exterior finish or appearance;
- (b) certain specific items described in the individual product data sheet or owner's manual;
- (c) malfunction resulting from use or operation of the product other than as specified in the individual product data sheet or owner's manual;
- (d) malfunction resulting from misuse or abuse of the product;
- (e) malfunction occurring at any time after repairs have been made to the product by anyone other than Elder Audio Service or any of its authorized service representatives.

To obtain warranty service, customer must deliver proof of purchase of the product in the form of a bill of sale or receipt invoice.

S1200B Speakers and Speaker Systems are guaranteed against malfunction due to defects in materials or workmanship for a period of three (3) years from the date of original purchase. The Limited Warranty does not apply to burned voice coils or malfunctions such as cone and/or coil damage resulting from improperly designed enclosures. Additional details are included in the Limited Warranty statement.

S1200B Accessories are guaranteed against malfunction due to defects in materials or workmanship for a period of one (1) year from the date of original purchase. Additional details are included in the Limited Warranty statement.

S1200B Flying Hardware (including enclosure-mounted hardware and rigging accessories) is guaranteed against malfunction due to defects in materials or workmanship for a period of one (1) year from the date of original purchase. Additional details are included in the Limited Warranty statement.

Specifications are subject to change without notice.



Beta Three

SI200B